

## TCA - Creative use of learning applications in school education

### Supporting guide:

- How to create an EU-Login
- How to register on the European School Education Platform and eTwinning
- How to add contacts on eTwinning

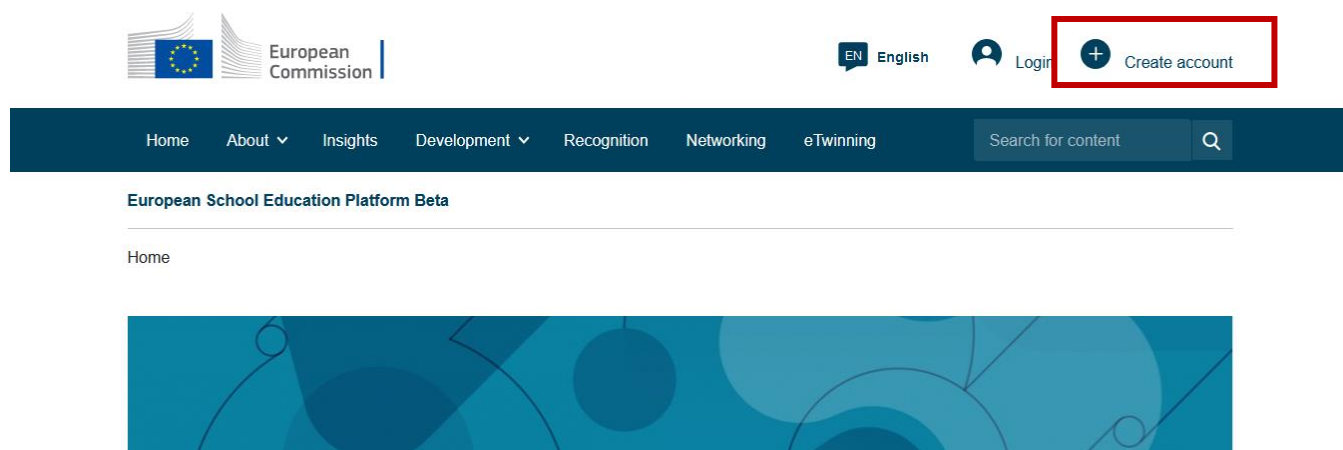
## How to create an EU-Login?

To create an EU-Login, you should follow the steps that are described on the [EU-Login website](#).

If you already had an eTwinning account but did not yet log in to the European School Education Platform, it is important to create an EU-Login with the same e-mail address that you used to register on the old eTwinning platform.

If you have an eTwinning account and an EU-Login with the same e-mail address or if you have an EU-Login but did never register on the eTwinning platform, you can go ahead and register on the European School Education Platform.

You are ready to create your [eTwinning](#) account on the [European School Education Platform](#)!



European Commission

EN English Login **Create account**

Home About Insights Development Recognition Networking eTwinning Search for content

European School Education Platform Beta

Home

## European School Education Platform and eTwinning registration

If you leave the page without submitting the form you will be redirected back to this page. If you want to cancel the registration process then please use the Cancel button.

## About you

Please fill in the following information about you for completing the registration

\* indicates a required field

First name: \*

Last name: \*

E-mail: \*

This information is added automatically and corresponds to the information that you provided when creating an EU-Login

Choose your preferred language

Site and email language \*

English

This information comes from your [EU Login](#). You can change your name, email address and password there. If you update your EU Login account details, the changes will be visible the next time you log in to the European School Education Platform.

Member type \*

- None -

Choose the member type 'Teacher'. You can then add the type of education provided as well as the subjects you are teaching

Country of work \*

- None -

Choose the country you are working in, not the one you are living in

Accept the ESEP terms and conditions: [Disclaimer](#) [Privacy Policy](#) [Code of Conduct](#) \*

It is mandatory to accept the terms and conditions of the platform

**Status message****Close this message** 

The changes to your profile have been saved.

**Register on the European School Education Platform**

## You are eligible to apply for eTwinning

### Why you should join eTwinning

eTwinning has created a school without borders, a common educational space for teachers and pupils. eTwinning promotes school collaboration in Europe through the use of information and communication technologies by providing support, tools and services to project schools.

The portal also offers online tools for teachers to find partners, launch projects, share ideas and best practices. Thanks to all individual tools, each member of the community can build interesting and useful partnerships with teachers throughout Europe in an easy, convenient and quick manner.

[I don't want to join eTwinning](#)[Join eTwinning](#)

Your registration on the European School Education Platform was successful!

You are now able to continue the registration process in order to join eTwinning and enjoy the new opportunities.

## Join eTwinning

Connect with European colleagues with similar interest by joining eTwinning

\* indicates a required field

### 1. Your role within the school

#### Subjects of teaching

Optional if you completed "Vocational subjects of teaching"

Select one or more options



#### Vocational subjects of teaching

Optional if you completed "Subjects of teaching"

Select one or more options



#### Ages taught from \*

- None -



#### Ages taught to \*

- None -



Available for eTwinning project

### 2. Add school\*

Search by organisation country

#### Country

Select country



**Search organisation**

[Clear filters](#)

In the first step of the eTwinning registration, you have to select your teaching subject(s) and the age of your pupils, if you are available for eTwinning projects (important for the networking area of the platform) and the country of the school you are working in.

## 2. Add school\*

Search by organisation country

Country

Luxembourg



**Search organisation**

[Clear filters](#)

### Search Organisation

Please insert 5 or more characters...



Can't find your organisation or school? [Register a new organisation or school.](#)

I declare that I have read and agree to the [eTwinning Privacy Policy](#) and the [eTwinning Code of Conduct](#)

Cancel

Skip this step

Next

After the selection of the country of your school, you can search your school on the eTwinning platform.

You know that your school is active in eTwinning, you can enter the name of your school and link your profile to your school. If you cannot find the school but you are sure that it exists in eTwinning, you can skip this step and link your profile to the school later on.

You don't know if your school is already registered? Try to find your school with the search function. If it already exists, you can choose your school from the list. If the school does not have a profile yet, you will have to create a profile for your school.

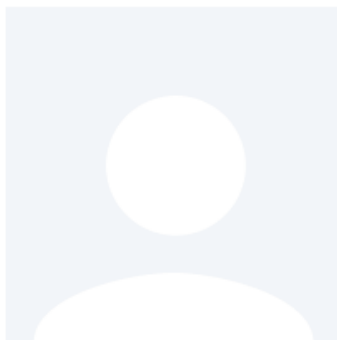
## Register on the European School Education Platform


### Your platform experience

Let's complete the last step of the registration process. This information will help you find relevant mobility opportunities, colleagues and courses.

#### 1. Profile information

##### Profile picture



Upload image 

One file only.  
10 MB limit.  
Allowed types: png gif jpg jpeg.

##### Description

Add description

You can now edit your personal profile! In the first step, you can upload a profile picture and write a short text about yourself and your interests to introduce yourself to other users of the platform and to facilitate future networking on the platform. Please note that only questions marked with an asterisk (\*) are mandatory.

**Profile visibility \***

Users registered on the platform ▾

Who can view your profile

**Time zone \***

- Select - ▾

**Languages spoken \***

English × ▾

**Topics you are interested in**

Select one or more options ▾

## 2. Newsletters

 I would like to receive the European School Education Platform newsletter

Your eTwinning application is pending. You will only receive the eTwinning newsletter when your application has been approved.

Close ×

**Newsletter language**

- None - ▾

Decide who can see your profile and inform other users about the languages you speak and the topics you are interested in. This might be useful to find future project partners.

You can decide if you want to receive the eTwinning newsletter and in which language you would like to receive it.



### 3. Notifications

Email address for notifications


### 4. Website

 Website URL

### 5. Social media

 Facebook profile

 Twitter profile

 Instagram profile

 LinkedIn profile

Who can contact you

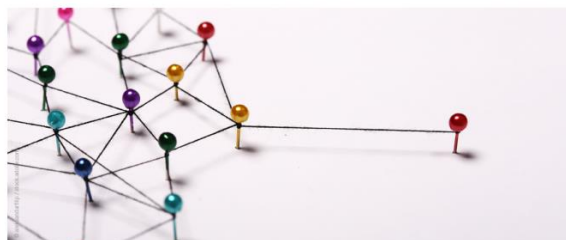
**Finish**

Last steps! Confirm your e-mail address for future notifications and provide a link (not mandatory) to your or your school's website and to your social media accounts. Before submitting, please specify who can contact you.

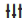
## Networking

### Overview

Find people, organisations, and schools to collaborate with. Participate in projects and professional development opportunities.



## People

 Show filters[Clear filters](#)

### All people (2)

Showing 2 results

Name ^	Default organisation	Registration date	Is Etwinner?
 Tom Jungers	National Support Service_Luxembourg (Luxembourg)	28.07.2022	Yes

Go to the tab 'People' and search for Tom Jungers, a member of the NSO in Luxembourg, and click on his profile.

After submitting your registration, the eTwinning national support organisation (NSO) from your country has to validate your registration. You can then proceed and go to the [networking part](#) of the European School Education Gateway

## European School Education Platform Beta

[Home](#) > [Networking](#) > [People](#) > Tom Jungers

ICT COORDINATOR ● eTwinning validated

**Tom Jungers**

Working for NSS in Luxembourg

[Show more](#) ▾

Default organisation: National Support Service\_Luxembourg

4 contacts

[Add as contact](#)[More options](#) ⋮

After selecting Tom's profile, please add him to your contacts. This is very important, if you do not send him a contact request, he cannot invite you to the eTwinning project that is set up for the TCA.

If you face any difficulties or if you have any further question, please feel free to contact [Joy Welbes](#) or [Tom Jungers](#).